

## Installation Instructions for the RDS-CL-06 Railwheel Sensor Clamp

ISSUE 2

PK 80126

### **▲ WARNING**

#### **PERSONAL INJURY**

- **DO NOT USE** in applications where product failure could result in personal injury or death.
- Improper installation of this device can cause personal injury. **STRICTLY FOLLOW** the instructions below.

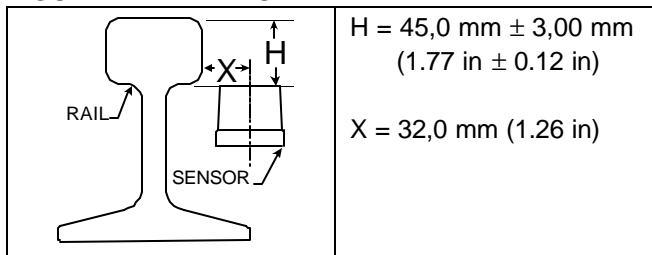
#### **MECHANICAL SPECIFICATIONS**

Operating Temperature	-40 °C to +85 °C (-40 °F to +185 °F)
Shock	500 g, halfsine 1.6 msec (IEC68-2-27)
Vibration	Sinusoidal 10-2000 Hz, 20 G, (IEC68-2-6) 30 minutes each axis for temperatures -40 °C, +25 °C, +85 °C
Mounting Torque	Rail clamp and adaptor plate mounting bolts: 162,8 N m (120 ft lb) Sensor clamp mounting bolts: 9,5 N m (7 ft lb)

#### **MOUNTING INSTRUCTIONS (see Figures 1-3)**

1. Select sensor mounting location.
2. Grind all overflow from top and sides of rail.
3. Grind and clean all rust and scale from clamp mounting location.
4. Position base bracket on rail. Drive on with hammer.
5. Position clamping bracket on rail. Drive on with hammer.
6. Install two 5/8 in lockwashers and two 5/8 in castlenuts on the rail clamp mounting bolts. Torque to 162,8 N m (120 ft lb). Install two 1/8 in cotter pins in holes and secure.
7. Mount adaptor plate using six 5/8 in flat washers, two 5/8 in lockwashers, and two 5/8 in castlenuts on the rail clamp mounting bolts. Torque to 162,8 N m (120 ft lb). Install two 1/8 in cotter pins in holes and secure.
8. Mount top bracket using two 5/8 in rail clamp mounting bolts, two 5/8 in flat washers, two 5/8 in lockwashers, and two 5/8 in castlenuts.
9. Position sensor on top bracket so that distance X is 32,0 mm (1.26 in). Install two 5/16 in sensor clamp mounting bolts, two sensor clamp mounting brackets, two 5/16 in lockwashers, and two 5/16 in castlenuts. Torque to 9,5 N m (7 ft lb). Install two 3/64 in cotter pins in holes and secure.
10. Adjust sensor position so that distance H is 42,0 mm to 48,0 mm (1.65 in to 1.89 in). Torque rail clamp mounting bolts to 162,8 N m (120 ft lb). Install two 1/8 in cotter pins in holes and secure.

**FIGURE 1: RAIL PROFILE**



**FIGURE 2: MOUNTING DIMENSIONS (for reference only) (mm/in)**

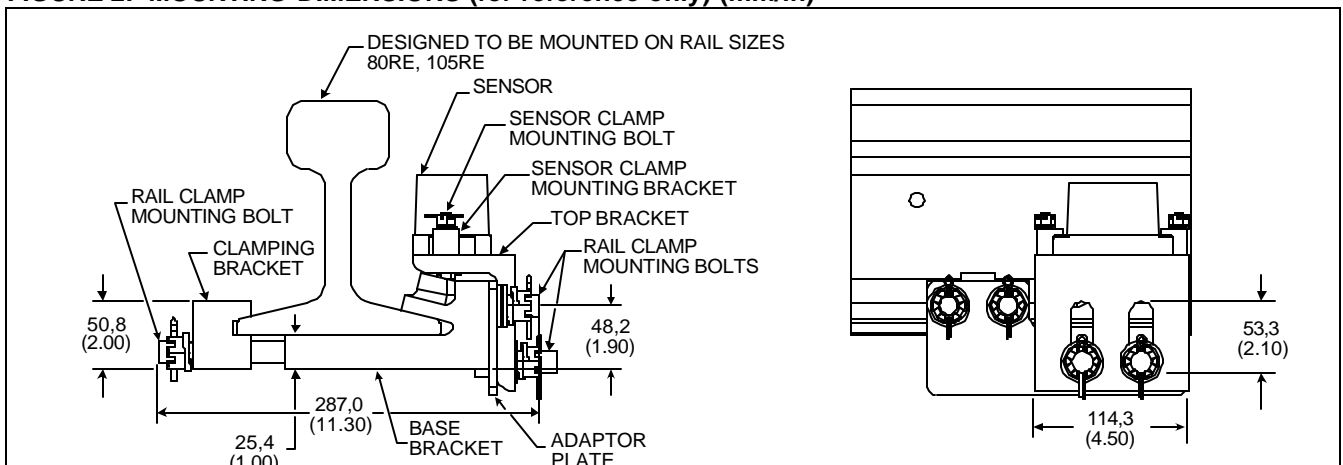
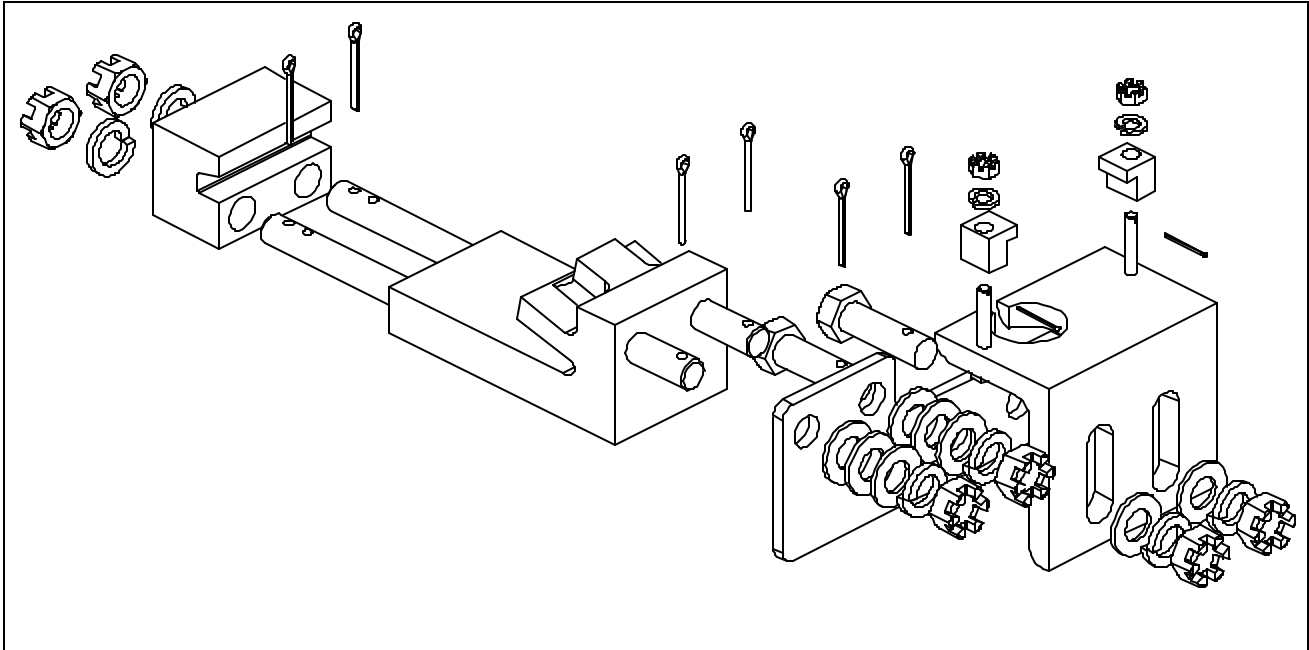


FIGURE 3: EXPLODED VIEW

**WARRANTY/REMEDY**

Honeywell warrants goods of its manufacture as being free of defective materials and faulty workmanship. Contact your local sales office for warranty information. If warranted goods are returned to Honeywell during the period of coverage, Honeywell will repair or replace without charge those items it finds defective. The foregoing is Buyer's sole remedy and is **in lieu of all other warranties, expressed or implied, including those of merchantability and fitness for a particular purpose.**

Specifications may change without notice. The information we supply is believed to be accurate and reliable as of this printing. However, we assume no responsibility for its use.

While we provide application assistance personally, through our literature and the Honeywell web site, it is up to the customer to determine the suitability of the product in the application.

For application assistance, current specifications, or name of the nearest Authorized Distributor, check the Honeywell web site or call:

1-800-537-6945 USA

1-800-737-3360 Canada

1-815-235-6847 International

**FAX**

1-815-235-6545 USA

**INTERNET**

[www.honeywell.com/sensing](http://www.honeywell.com/sensing)

[info.sc@honeywell.com](mailto:info.sc@honeywell.com)

**Honeywell**
**Sensing and Control**

Honeywell Inc.

11 West Spring Street

Freeport, Illinois 61032



Printed with Soy Ink  
on 50% Recycled Paper

PK 80126-2-EN IL50 NAM 0303 Printed in USA

[www.honeywell.com/sensing](http://www.honeywell.com/sensing)