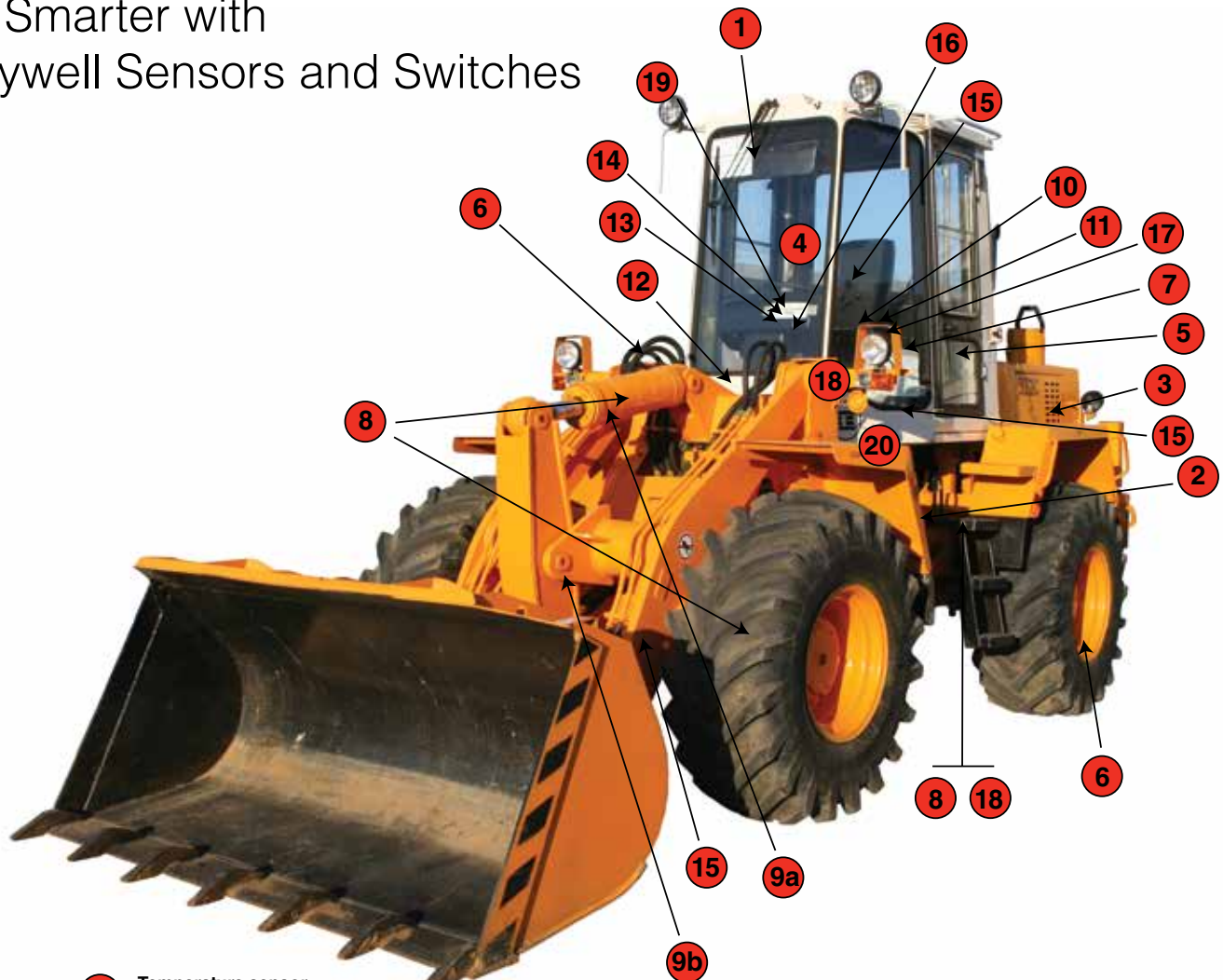


## Work Smarter with Honeywell Sensors and Switches



- 1 Temperature sensor**  
(Cabin sensing) – ES-110 Series, LTP Series
- 2 Temperature sensor**  
(Hydraulic oil sensing) – R300 Series, LTP Series
- 3 Thermostat**  
(Fire suppression sensing) – 3000 Series
- 4 Smart key**  
(Limits front loader function by operator's certification level)
- 5 Hall-effect position sensor**  
(Door position sensing) – 103SR Series
- 6 Speed sensors**  
(Hydraulic pump and wheel speed sensing) – 3000 Series VRS, GT Series, GTN Series, LCZ Series, SNDH Series
- 7 Infrared sensors**  
(Hand-grip joystick controls sensing) – SMD2440 Series, SME2470 Series
- 8 Stainless steel media isolated pressure sensor**  
(Hydraulic, braking system, and fuel tank level sensing) – MLH Series, 13mm Series, 19mm Series, SPT Series
- 9<sup>a</sup> SMART position sensor**  
(Vehicle and load non-contact, absolute position sensing) –  
**9a.** SPS-Linear  
**9b.** SPS-Rotary (product in development)
- 10 Hour meter**  
(Engine usage tracking) – Quartz plus hour meter (85000), LCD volt/hour meter (98000)
- 11 Key switch**  
(Vehicle ignition) – Three-position key switch
- 12 Push/pull switch**  
(Emergency stop) – 87000 Series
- 13 Shifter**  
(Forward-neutral-reverse) – 81248
- 14 Turn signal**  
(Multi-purpose turn signal)
- 15 MICRO SWITCH™ limit switch**  
(Back-up alarm) – BZE Series
- 16 MICRO SWITCH™ toggle switch**  
(Manual operator switch)
- 17 Bipolar Hall-effect position sensor IC**  
(Power seat motor) – SS400 Series
- 18 Linear Hall-effect position sensor IC**  
(Stability control system and remote mirror with memory control) – SS490 Series
- 19 Angular or linear Hall-effect position sensor IC**  
(Power steering control system) – AP500 Series, SS490 Series
- 20 MICRO SWITCH™ limit switch**  
(Level sensor for cab position) – GLS Series



# Work Smarter with Honeywell Sensors and Switches

## Work smarter with...

Honeywell S&PS sensors, switches, and controls can be found throughout vehicle bodies such as front loaders, buses, locomotives, ambulances, trucks, etc. They are used as operator/ride controls, automation guides, asset trackers, and provide security and comfort. Honeywell shifters, key switches, limits, SMART position sensors, temperature and pressure sensors are rugged, reliable, and backed by Honeywell's engineering expertise. Honeywell heavy-duty equipment manufacturers' needs include productivity, high reliability, comfort, safety, and simpler operations for less-skilled operators. Honeywell S&PS provides this and much more.

## Comfort/safety

- Cabin climate and temperature maintained with ES-110 Series and LTP Series temperature sensors
- Fire suppression monitored with 3000 Series thermostats
- Door position sensed by 103SR Series Hall-effect position sensor
- Limit front loader operability by operator certification level with SMART key
- Hydraulic braking system monitored with MLH Series, 13 mm Series, 19 mm Series, and SPT Series stainless steel media isolated pressure sensors
- Vehicle and load non-contact absolute position sensors with SPS Series SMART position sensors
- Emergency stop originated by MICRO SWITCH™ 87000 Series push-pull switch
- Back-up alarm controlled by MICRO SWITCH™ BZE basic switches
- Stability control and remote mirror with memory control using SS490 Series linear Hall-effect position sensor ICs
- Level sensing for cab position using MICRO SWITCH™ GLS Series limit switches

## Find out more

To learn more about Honeywell Sensing and Productivity Solutions' products, call **+1-815-235-6847** or **1-800-537-6945**, visit **sensing.honeywell.com**, or e-mail inquiries to **info.sc@honeywell.com**

Sensing and Productivity Solutions

Honeywell

1985 Douglas Drive North

Golden Valley, MN 55422

**honeywell.com**

## High reliability

- Hydraulic oil temperature measured with R300 Series and LTP Series temperature sensors
- Hydraulic pump and wheel speed measured with 3000 Series VRS, GT Series, GTN Series, LCZ Series and SNDH Series speed sensors
- Engine use tracking with 85000 and 98000 hour meters
- Engine on/off controlled with three-position key switches

## Productivity

- Vehicle direction and indication controlled by multi-purpose turn signals and 81248 forward-neutral-reverse shifters
- Hand-grip joysticks controlled by SMD2440 Series and SME2470 Series infrared sensors

## Simpler operations

- Fuel tank level sensing conducted with MLH Series, 13mm Series, 19mm Series, and SPT Series stainless steel media isolated pressure sensors
- Manual operator switches throughout the cab utilize MICRO SWITCH™ toggle switches
- Power steering control with AP500 Series and SS490 Series angular or linear Hall-effect position sensor ICs
- Power seat motor controlled by SS400 Series bipolar Hall-effect position sensor ICs

While Honeywell provides application assistance personally, through its literature and the Honeywell Web site, it is up to the customer to determine the suitability of the product in the application.

# Honeywell