

Interactive Catalog Replaces Catalog Pages

Honeywell Sensing and Control has replaced the PDF product catalog with the new **Interactive Catalog**. The **Interactive Catalog** is a power search tool that makes it easier to find product information. It includes more installation, application, and technical information than ever before.



**Click this icon to try the new
Interactive Catalog.**

Sensing and Control

Honeywell Inc.

11 West Spring Street

Freeport, Illinois 61032

Basic Switches

Magnetic Blow-out



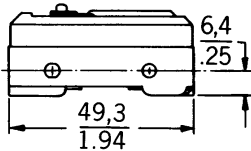
FEATURES

- Arc resistant case
- Mechanical life of 100,000 operations — 95% survival
- Temperature tolerance to +180°F (82°C)
- Mounting interchangeability with Z switches
- UL recognized

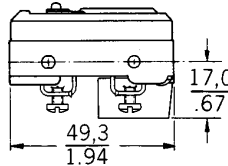
GENERAL INFORMATION

MT (single-pole double-throw) magnetic blow-out switches are designed to switch high capacity (125 and 250 VDC) systems. An integral magnet around the contact gap protects the contacts by deflecting the arc. Vents between the cover and housing allow the hot gas to escape. These switches are designed for the control of DC motors, solenoids, etc.

AVAILABLE TERMINALS



Solder (No listing designation)



A28
6-32NC x .218" Screws
will accept up to #12 wire.

ELECTRICAL RATING

| Circuitry | Electrical Data and UL Codes |
|--|---|
| Single-pole double-throw unless otherwise noted in order guide | <p>K Rating established with switch non-polarized 10 amps, 125 vac or vdc; 1/4 hp, 125 vac or vdc. UL Code L 168</p> <p>Non-polarized: 10 amps res. or 1/4 hp, 125 vdc; 3 amps max. res. 250 vdc.</p> <p>Polarized*: 10 amps res. or 1/2 hp, 125 vdc; 3 amps max. res., 250 vdc.</p> |

*To polarize, connect negative side of line to common terminal. To achieve the same effect, mount switch with brass screws, using a non-magnetic barrier (at least 1/4" thick) between the switch and mounting surface.

Characteristics: O.F. – Operating Force;
R.F. – Release Force; P.T. – Pretravel;
O.T. – Overtravel; D.T. – Differential Travel;
O.P. – Operating Position.

ORDER GUIDE

| Catalog Listing | Recommended For | Electrical Data and UL Codes | O.F. newtons ounces | R.F. min. newtons ounces | P.T. max. mm inches | O.T. min. mm inches | D.T. max. mm inches | O.P. mm inches |
|------------------|------------------|------------------------------|--------------------------|--------------------------|---------------------|---------------------|-----------------------|------------------------|
| MT-4R-A28 | Pin plunger SPDT | 10 Amps K | 3,34-5,0 12-18 | 1,39 5 | 1,02 .04 | 0,13 .005 | 0,1-0,18 .004-.007 | 15,9±0,38 .625±.015 |



Dim. Dwg. Fig. 1

Basic Switches

Magnetic Blow-out

MT Series

ORDER GUIDE



Dim. Dwg. Fig. 2

| Catalog Listing | Description | Electrical Data and UL Codes | O.F. max. newtons ounces | R.F. min. newtons ounces | P.T. max. mm inches | O.T. min. mm inches | D.T. max. mm inches | O.P.* mm inches |
|-----------------|----------------|------------------------------|-----------------------------|-----------------------------|------------------------|------------------------|------------------------|--------------------|
| MT-4RV-A28 | Straight lever | 10 Amps K | 0,56 2 | 0,14 0.5 | 12,7 0.5 | 1,19 .047 | 2,16 .085 | 19,1 .750 |



Dim. Dwg. Fig. 3

| | | | | | | | | |
|--------------|---|--------------|--------------|--------------|--------------|--------------|--------------|---------------|
| MT-4RV2-A28 | 1.90 inch (48,3mm) lever with hardened steel roller | 10 Amps K | 0,76 2.75 | 0,07 0.25 | 8,89 0.35 | 0,79 .031 | 1,65 .065 | 30,2 1.188 |
| MT-4RV22-A28 | 1.03 inch (26,2mm) lever with hardened steel roller | 10 Amps K | 1,25 4.5 | 0,28 1 | 5,08 .200 | 0,38 .015 | 0,89 .035 | 31,3 1.234 |



Dim. Dwg. Fig. 4

| | | | | | | | | |
|------------|----------------------------------|--------------|------------|-----------|---|----------------------|---|--------------|
| MT-4RL-A28 | 1.95 inch (49,5mm) flexible leaf | 10 Amps K | 3,34 12 | 0,28 1 | — | 1,52 .060 max. | — | 19,1 .750 |
|------------|----------------------------------|--------------|------------|-----------|---|----------------------|---|--------------|



Dim. Dwg. Fig. 5

| | | | | | | | | |
|-------------|---|--------------|------------|-----------|---|----------------------|---|---------------|
| MT-4RL2-A28 | 1.82 inch (46,2mm) flexible leaf with hardened steel roller | 10 Amps K | 3,34 12 | 0,28 1 | — | 1,52 .060 max. | — | 30,2 1.188 |
|-------------|---|--------------|------------|-----------|---|----------------------|---|---------------|

Standard Basic Switches

Except where stated * $\pm 0,76$ mm
 $\pm .030$ in.

Basic Switches

Magnetic Blow-out

MT Series

MOUNTING DIMENSIONS (For reference only)

PIN PLUNGER

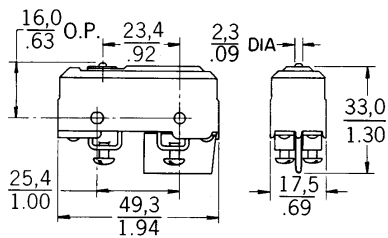


Fig. 1

STRAIGHT LEVER

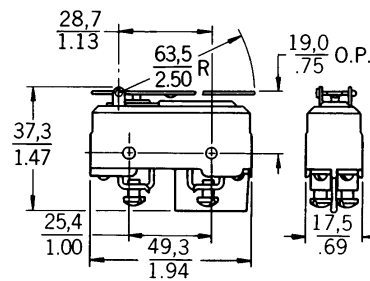


Fig. 2

ROLLER LEVER

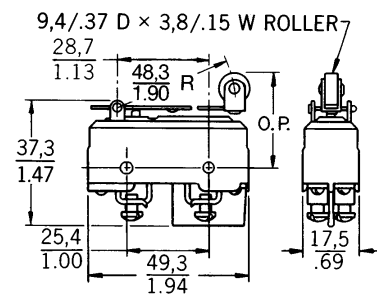


Fig. 3

FLEXIBLE LEAF

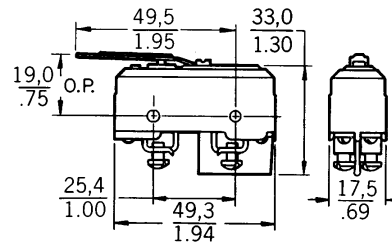


Fig. 4

FLEXIBLE ROLLER LEAF

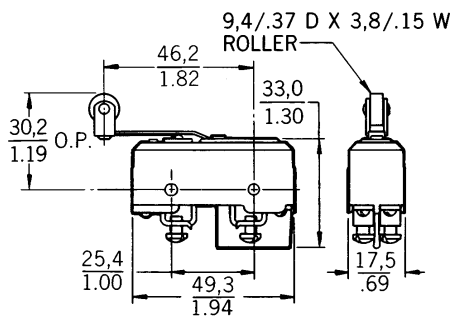


Fig. 5

Mounting holes accept pins or screws of .139" (3.53 mm) diameter.

Key: $\frac{0,0}{0.00} = \text{mm}$
 $\frac{0.00}{0.00} = \text{inches}$