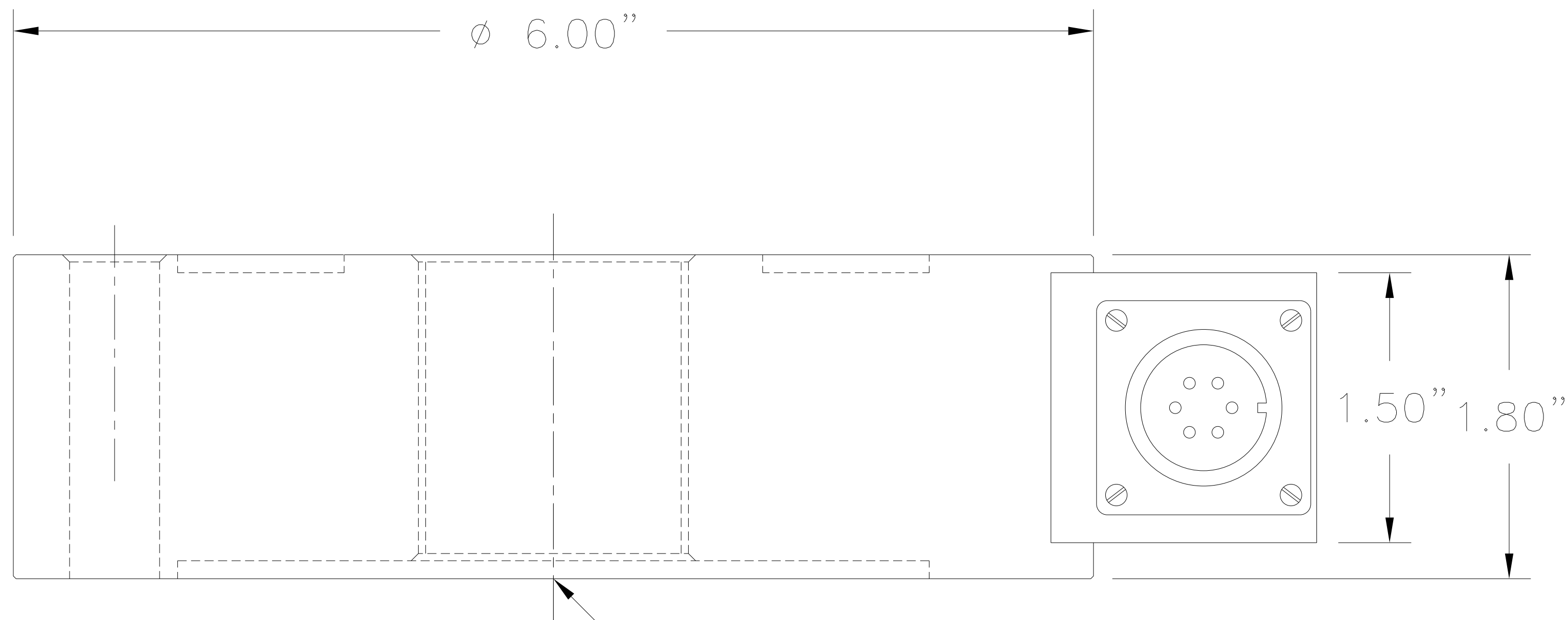
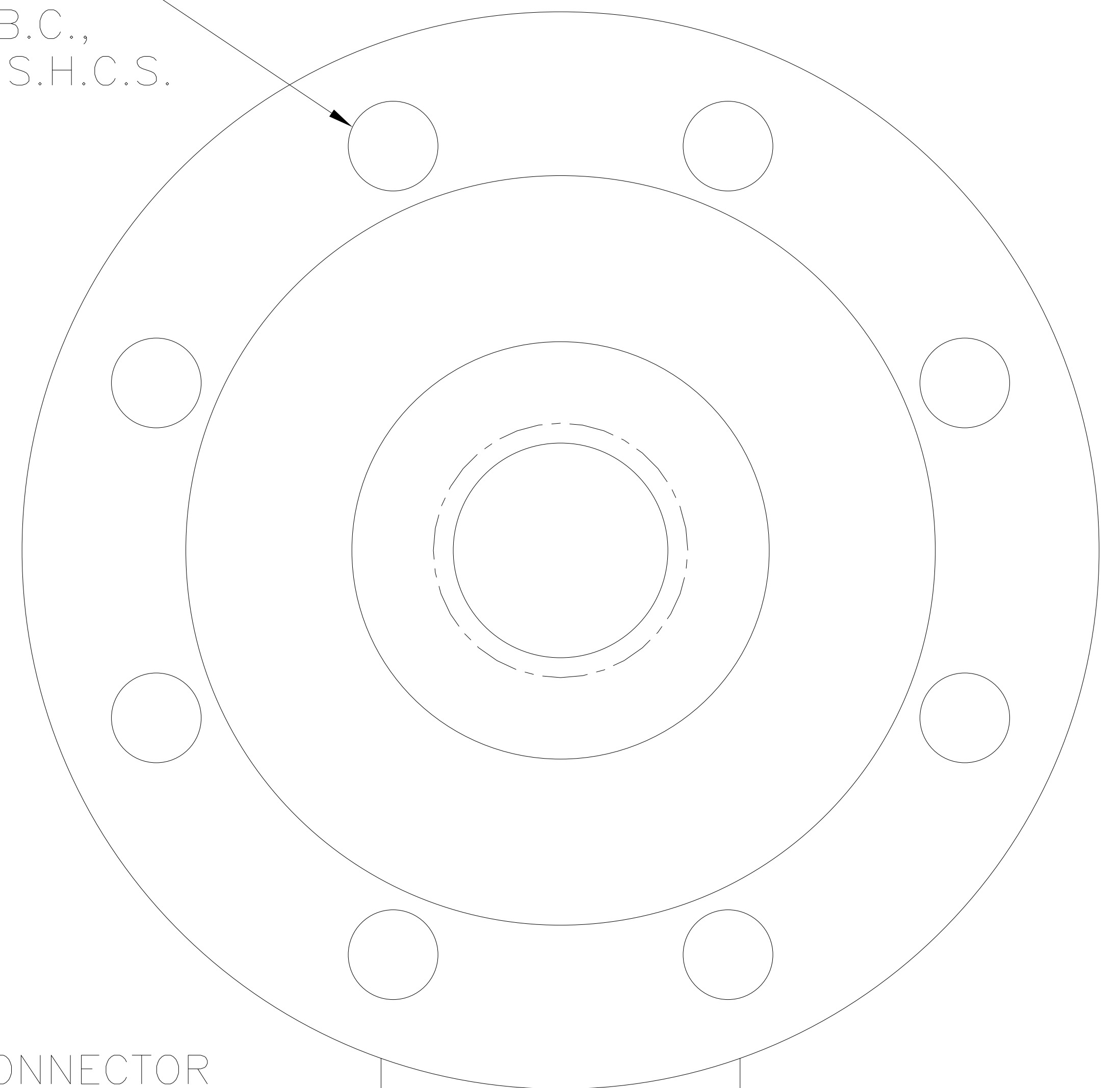


000-0474-00

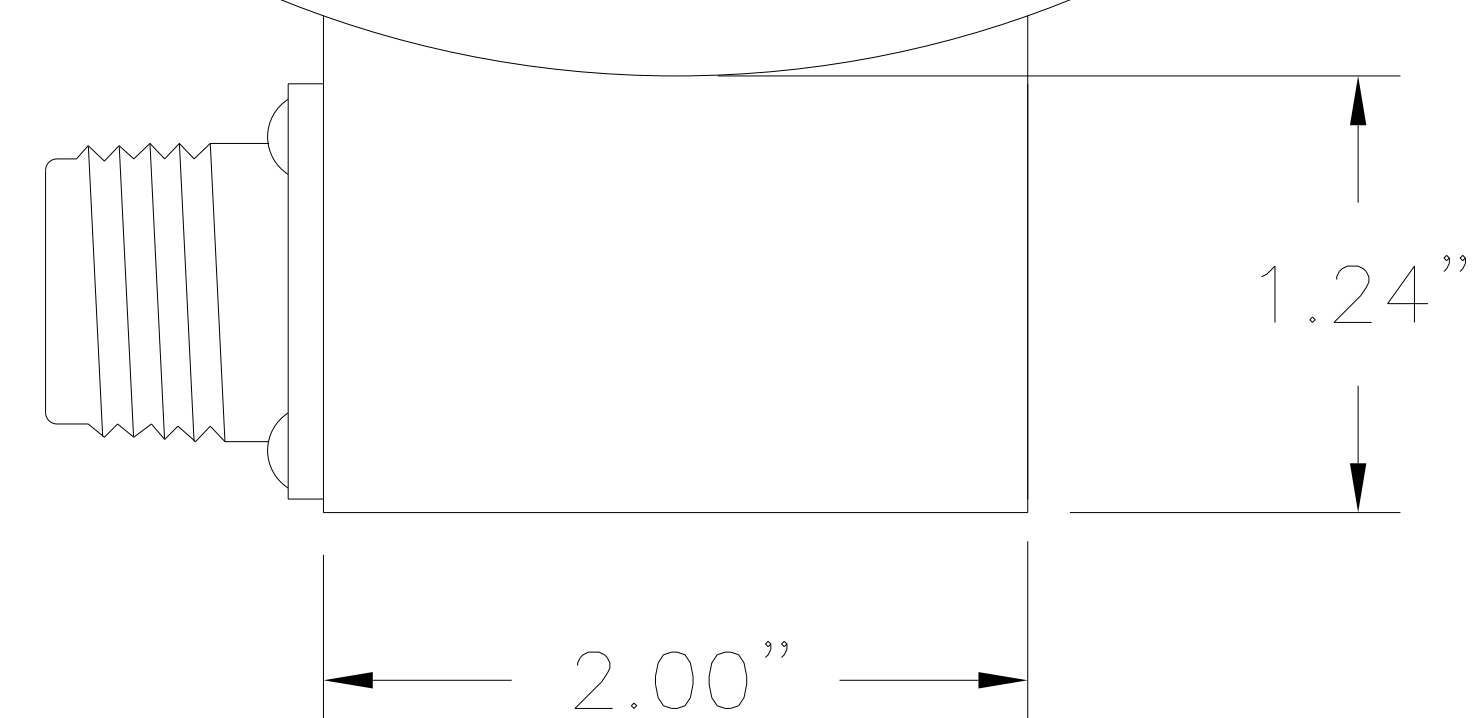
8 HOLES, EQUALLY  
SPACED ON  $\phi 4.875''$  B.C.,  
CLEARANCE for  $1/2''$  S.H.C.S.



1 1/2-12 UN-2B



ELECTRICAL CONNECTOR  
MS3102E-14S-6P  
MATING CONNECTOR  
MS3106A-14S-6S  
(NOT INCLUDED)



AVAILABLE CAPACITY: 20,000 THRU 50,000 LBS.  
OUTPUT: 3 mv/v NOMINAL  
POSITIVE IN TENSION  
ZERO BAL:  $\pm 1\%$  F.S.  
LINEARITY: 0.1% F.S.  
HYSTERESIS: 0.08% F.S.  
SPAN T.C.: .002% Rdg./?F  
ZERO T.C.: .002% F.S./?F  
BRIDGE RESISTANCE: 350  $\Omega$   
EXCITATION: 10 VDC  
MATERIAL: 17-4 P.H.  
STAINLESS STEEL

UNAMPLIFIED

PIN	DESIGNATION
A	(+)EXCITATION
B	(+)EXCITATION
C	(-)EXCITATION
D	(-)EXCITATION
E	(-)OUTPUT
F	(+)OUTPUT

D	REVISED PER ECN #2892	26APR90	
REV	DESCRIPTION	REVISOR	APPROV. RELEASE
SCALE: NONE	DRAWN 2APR76 JJB	CHECKED: JP 12/27/94	APPROVED: RJG 12/27/94
<b>SENSOTEC INC.</b> 1200 CHESAPEAKE AVE. COLUMBUS, OHIO 43212			
.XX $\pm .01$	OUTLINE DRAWING for P/N 060-0573-XX		
.XXX $\pm .005$	MODEL 41 LOAD CELL		
$\pm 1/2^\circ$	63	DOCUMENT NUMBER	
	SHEET 1 OF 1	000-0474-00	