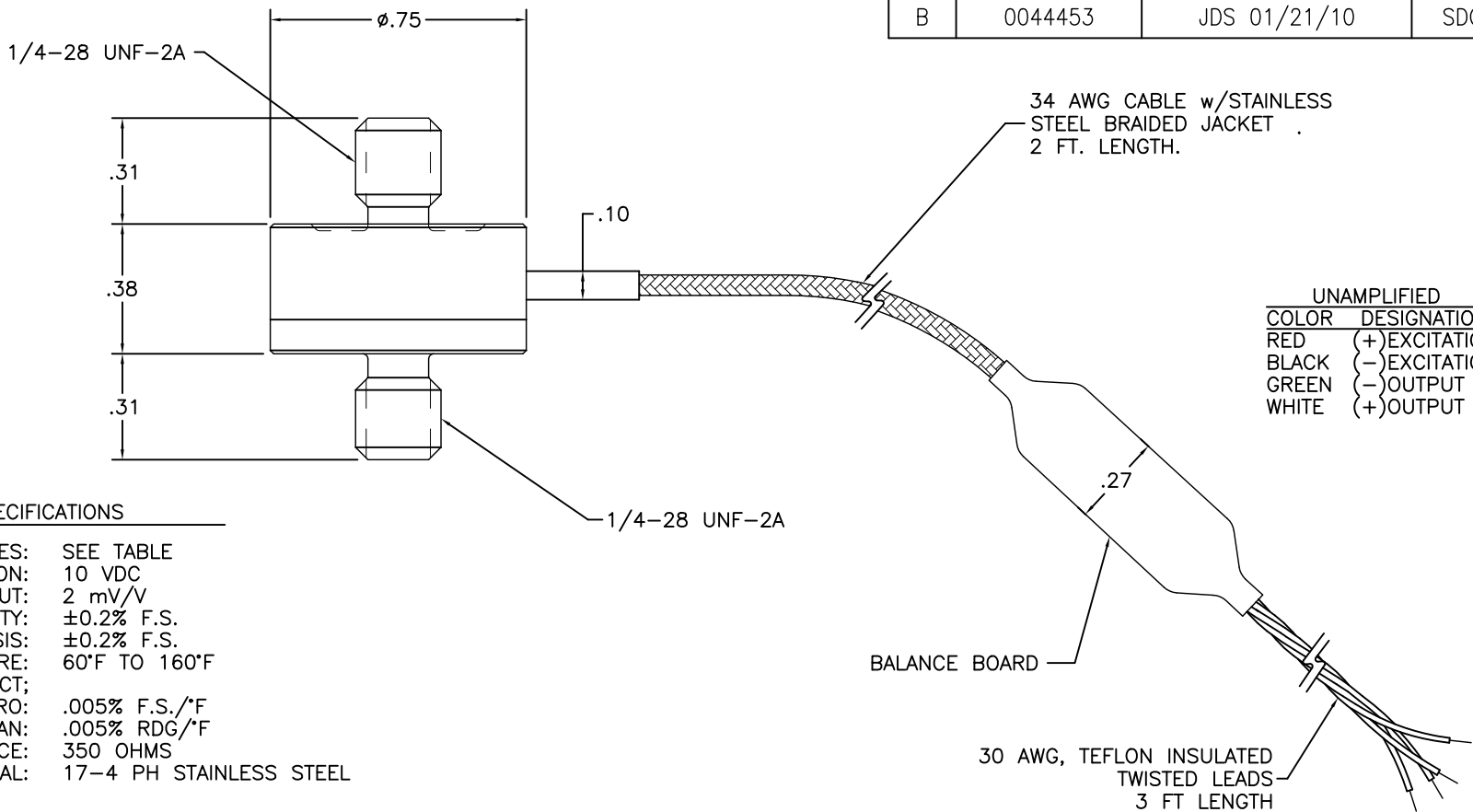


HONEYWELL PART NUMBER
-

REV	DOCUMENT	CHANGED BY	CHECK
B	0044453	JDS 01/21/10	SDG



UNAMPLIFIED	
COLOR	DESIGNATION
RED	(+)EXCITATION
BLACK	(-)EXCITATION
GREEN	(-)OUTPUT
WHITE	(+)OUTPUT

SPECIFICATIONS

AVAILABLE RANGES: SEE TABLE
 EXCITATION: 10 VDC
 OUTPUT: 2 mV/V
 NONLINEARITY: ±0.2% F.S.
 HYSTERESIS: ±0.2% F.S.
 COMPENSATED TEMPERATURE: 60°F TO 160°F
 TEMPERATURE EFFECT:
 ZERO: .005% F.S./°F
 SPAN: .005% RDG/°F
 BRIDGE RESISTANCE: 350 OHMS
 MATERIAL: 17-4 PH STAINLESS STEEL

-08	5 KN (1124 LBS)
-07	1000 LBS
-06	750 LBS
-05	250 LBS
060-2335-01	500 LBS
PART NUMBER	CAPACITY

DESIGN UNITS: INCH			
TOLERANCES UNLESS NOTED:			
NO PLACES	X	±	-
ONE PLACE	.X	±	.1
TWO PLACE	.XX	±	.01
THREE PLACE	.XXX	±	.005
ANGLES	X	±	.5°
THIRD ANGLE PROJECTION			

DRAWN	TY	12/08/1988
CHECK	JHM	07/06/1998
THIS DRAWING COVERS A PROPRIETARY ITEM AND IS THE PROPERTY OF HONEYWELL. THIS DRAWING IS NOT TO BE COPIED OR USED WITHOUT THE PERMISSION OF HONEYWELL.		
INTERPRET PER ASME Y14.5M-1994 OTHER HONEYWELL ENGINEERING STANDARDS MAY APPLY		
AUTOCAD		

Honeywell				
TITLE OUTLINE DRAWING, MODEL 11, 250 THRU 1000 LBS.				
SIZE	TYPE	CAGE CODE	DRAWING NAME	REV
A	E	51518	000-2091-00	B
SCALE	-	SHEET		1 OF 1